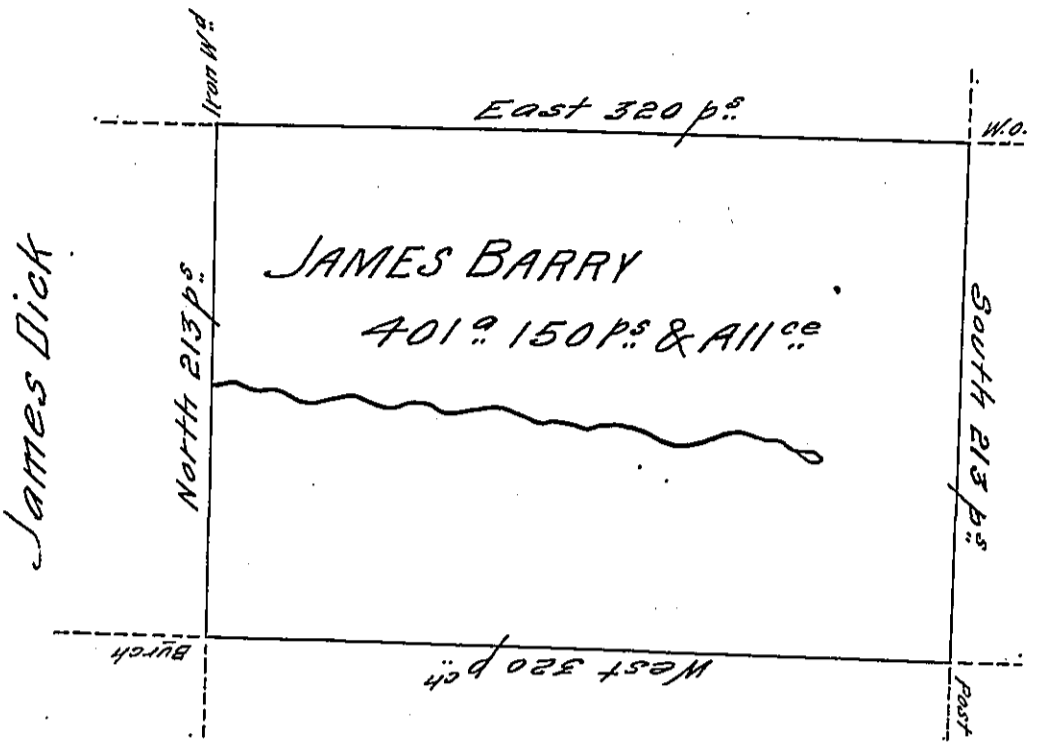


W^m Barry



John Barry

Situate on the west side of French Creek in Allegheny County Containing 401 Acres and 150^ps and allowance of Six $\frac{1}{2}$ Cent for Roads &c. Surveyed the 8th day of November 1794, In pursuance of his Improvement bearing date the 7th day of November 1794.

W^m Power D^y Sr.

To Daniel Brodhead Esq^r.
 Surveyor General - }

IN TESTIMONY that the above is a copy of the original remaining on file in the Department of Internal Affairs of Pennsylvania, made conformably to an Act of Assembly approved the 16th day of February, 1833, I have hereunto set my Hand and caused the Seal of said Department to be affixed at Harrisburg, this twenty-sixth day of April 1906

James P. Brown
 Secretary of Internal Affairs.